




GARDEN PARK

GROVE




CREATE

# AN ABUNDANT LIFE AT GARDEN PARK GROVE



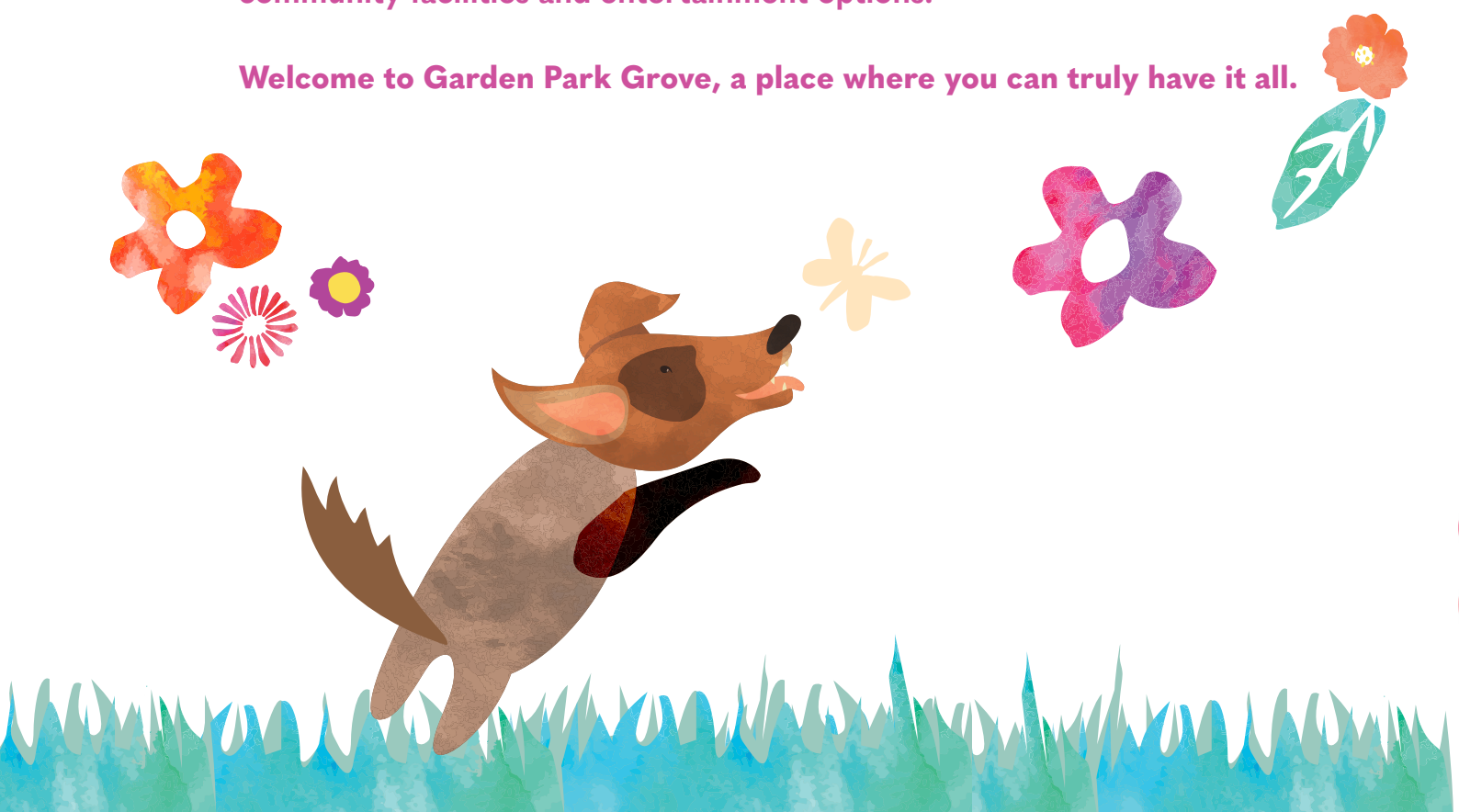
Discover a place where you can create your dream family sanctuary in a thriving community with a vibrant lifestyle. Your perfect home isn't just about the house you build: it's about the community you live in.



Garden Park Grove is ideally located in the well-established community of Sinagra, in the heart of Wanneroo. A place surrounded by an abundance of nature and amenity.

Shopping, dining and cafes are just around the corner. Local parks and playgrounds are within walking distance for the whole family to enjoy. You'll also have easy access to great local schools, state-of-the-art community facilities and entertainment options.

Welcome to Garden Park Grove, a place where you can truly have it all.





# A PLACE TO CONNECT

## COMMUNITY IS AT THE HEART OF IT ALL

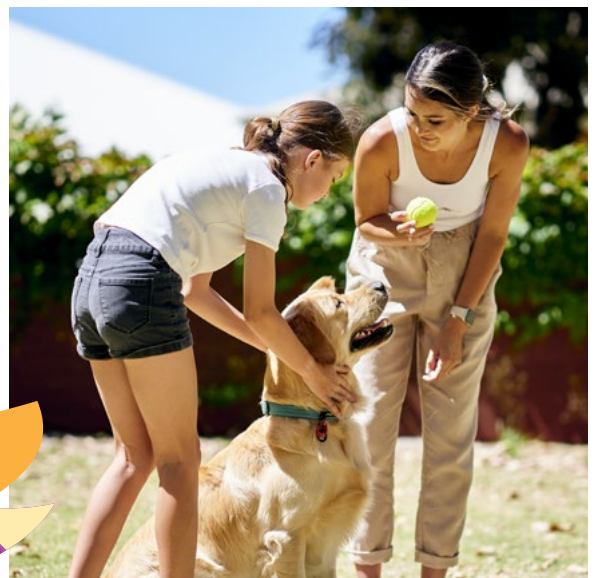
Set amongst the vibrant, thriving community of Sinagra, it's all waiting for you at Garden Park Grove.

With deep roots in the history of the region, this is a place filled with abundance. A place renowned for providing connection, and a legacy of fostering strong community ties.

You'll never be left wanting more thanks to large homesites and an abundance of established amenities surrounding you. It's the perfect place for growing families and growing relationships.

Come and see for yourself the kind of dream lifestyle you can have at Garden Park Grove.

# HOME SWEET HOME





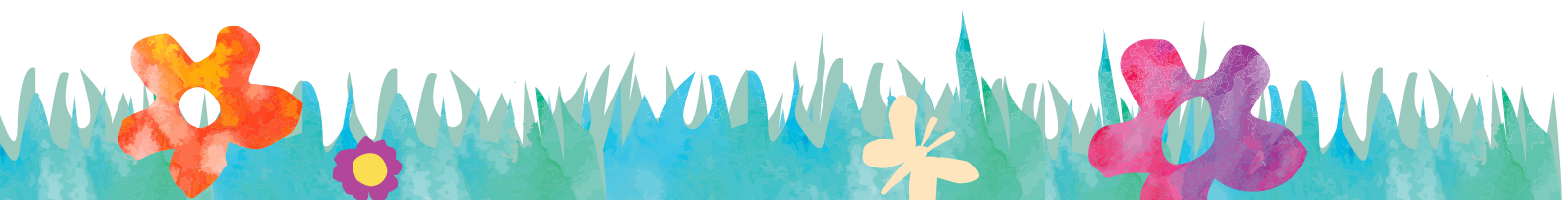
# A PLACE TO PLAY

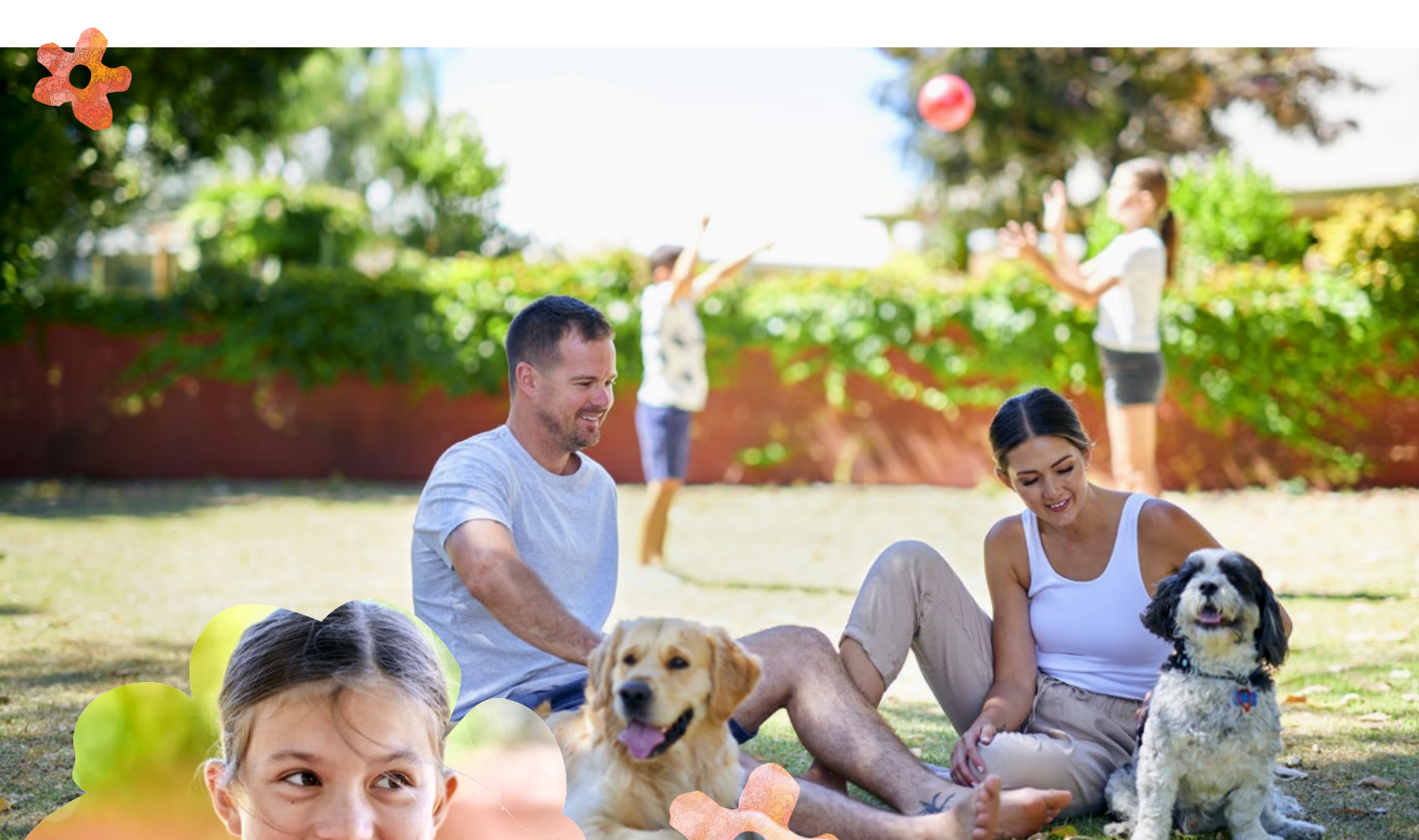
## ENJOY LIFE TO ITS FULLEST

Life is to be enjoyed, and at Garden Park Grove you have an abundance of options to live life to its fullest.

Find the latest fashions at nearby shopping centres in Wanneroo and Joondalup, or enjoy treating your tastebuds at a choice of restaurants and eateries. Get to know your neighbours and what's in season at local markets celebrated for their rich local produce on offer.

You can also immerse yourself in the surrounding natural environment with beautiful parks, natural lakes and bushland, as well as a botanical mini golf course all at your doorstep.





# FAMILY FRIENDLY FUN

PLAY AS  
NATURE  
INTENDED



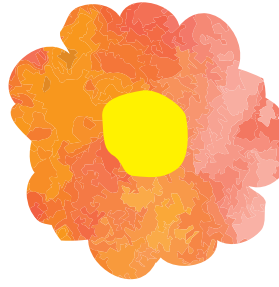
Surrounded by nature's beauty, our large family size homesites allow you to enjoy your own space the way you intend.

You're spoilt for choice with a large sporting field and playground in the heart of our community providing a perfect place to stay active, walk the dog, playing with the kids and creating lifelong memories.

With Yellagonga Regional Park on your doorstep, enjoy immersing yourself in the natural environment and rich history of the region. Grab your bathers and head for a swim down the road at Aquamation, or find yourself at Mullaloo Beach in less than 15 minutes.

Get back to nature and explore the great outdoors with Garden Park Grove.





# A PLACE TO GROW & LEARN

Community means more than a place to call home. It's a place where relationships foster, where neighbours become friends, and friends become family.

Live, love and learn all within our vibrant, thriving community with a variety of great schools, childcare and further learning options available right on your doorstep.

No matter which corner you call home, you'll be in walking distance to great schools – including the future Sinagra Primary School at the heart of Garden Park Grove. You'll also find both public and private secondary schools, tertiary and university education precincts all within 10km of home.





# A PLACE IN NATURE

## FEEL PART OF THE REGION'S RICH LEGACY

Living within the bounds of the City of Wanneroo means you live amongst a rich cultural region with a celebrated agricultural history.

Derived from the word Wanneru meaning 'place of Aboriginal women's digging stick', the City was given its name due to the rich soil found in the area; soil perfect for growing and nurturing fresh produce – something Sinagra has long been celebrated for.

Just like its rich history and the fertile land your home is built on, your family can flourish by establishing roots in Garden Park Grove.



# GARDEN PARK GROVE



## LEGEND

-  Sales Office
-  Display Village
-  Future Primary School

## DESIGNED WITH FAMILY IN MIND

You'll find everything you need for your growing family at Garden Park Grove. Large family-sized blocks, parks, playgrounds and schools all within walking distance, surrounded by the beauty of our natural environment.

# THE HEART OF IT ALL

## UNDER 2KM

### CHILDCARE

Good Start Early Learning Centre	1.3km
Mini Babini Childcare Centre	800m

### EDUCATION

Proposed Future Primary School	50m
--------------------------------	-----

### LIFESTYLE

The Ashby Bar and Bistro	1.4km
--------------------------	-------

### RECREATION

Brolo Park	900
Caporn Park	1.3km
Edgar Griffith Park	1.3km
Elton Park	1.1km
Mirto Park	800m
San Teodoro Park	600m

### SHOPPING

Chemist Warehouse Ashby	1.4km
Farmer Jacks	1.2km

## UNDER 3KM

### CHILDCARE

Sparrow Early Learning	2.3km
------------------------	-------

### EDUCATION

St Anthony's Primary School	2.5km
Wanneroo Primary School	2.6km

### LIFESTYLE

Wanneroo Sports and Social Club	3km
Wanneroo Villa Tavern	2.5km

### RECREATION

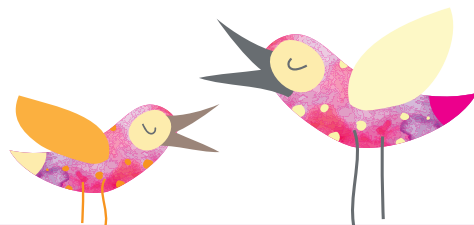
Aqua Motion Pool	2.8km
Lake Joondalup Park	2.1km
Rotary Park	2.6km

### SHOPPING

Wanneroo Central	2.8km
•Aldi	
•Coles	

### MEDICAL

Wanneroo GP Super Clinic	2.6km
--------------------------	-------



## UNDER 5KM

### EDUCATION

St Stephen's - Carramar Campus	4.4km
Wanneroo Secondary College	3.4km

### LIFESTYLE

Restaurant & bars	From 4km
-------------------	----------

### RECREATION

Wanneroo Botanic Gardens and Mini Golf	4.6km
Wanneroo Showgrounds and Skate Park	3.4km
Wanneroo Tennis Club	4.2km

## UNDER 10KM

### EDUCATION

Edith Cowan University	9km
Mater Dei College	9.2km
North Metro TAFE	8.9km

### LIFESTYLE

Currambine Bar and Bistro	10km
---------------------------	------

### MEDICAL

Joondalup Health Campus	8.4km
-------------------------	-------

### RECREATION

Carramar Golf Course	6.2km
HBF Arena	7.7km
Neil Hawkins Park	8.6km

### SERVICES

Joondalup Public Library	8.6km
--------------------------	-------

### SHOPPING

Lakeside Joondalup Shopping Centre	8.4km
Wanneroo Markets	7.9km

### TRANSPORT

Edgewater Train Station	8.4km
Joondalup Train Station	9.1km
Whitfords Train Station	8.9km

## UNDER 15KM

### EDUCATION

Prendiville Catholic College	11.3km
------------------------------	--------

### LIFESTYLE

Mullaloo Beach Hotel and Restaurant	12.7km
-------------------------------------	--------

### RECREATION

Iluka Beach	11.7km
Joondalup Resort and Golf Course	10.4km
Mullaloo Beach	13.3km
Ocean Reef Boat Harbour	13km

### SHOPPING

Currambine Central	10.2km
Westfield Whitford City	12.4km





Hillarys Boat Harbour

Edgewater Train Station

Mitchell Freeway

Joondalup Gate

Scenic Drive

Rotary Park

Wanneroo Sports Club

Wanneroo Primary School

Wanneroo Central Shopping Centre

Wanneroo Markets

Aquamation

St Anthony's Primary School

Proposed Primary School

Griffiths Rd Extension

GARDEN PARK  
GROVE

IT'S ALL WAITING FOR YOU  
AT GARDEN PARK GROVE



Ocean Reef Boat Harbour

Joondalup Golf Resort

Joondalup Train Station

ECU Joondalup

HBF Arena

Joondalup Drive

Lakeside Joondalup Shopping Centre

Lake Joondalup

Joondalup Health Campus

Wanneroo Road

Pinjar Road

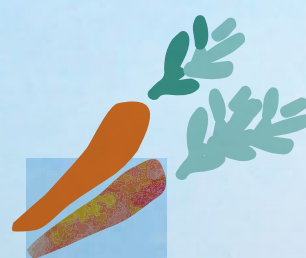
Vincent Road

Ashby Tavern

Ashby Shopping Precinct

SET AMONGST THE VIBRANT, THRIVING COMMUNITY OF SINGARA,  
YOU CAN BUILD YOUR DREAM AND LIVE IN YOUR HOME  
SURROUNDED BY EVERYTHING YOU NEED

# A SCRUMPTIOUS LITTLE RECIPE



## CARROT SOUP WITH ROASTED CHICKPEAS (FOR 6 SERVINGS)

### INGREDIENTS:

2 tbsp olive oil  
1 onion; finely chopped  
2 cloves garlic; crushed  
1 tsp ground coriander  
4 large carrots; peeled and diced  
100 ml dry white wine; (optional)

1 tbsp carrot tops;  
or fresh coriander, chopped  
1 1/4 litres vegetable stock  
200 g Greek yoghurt  
toasted sourdough; to serve salt  
freshly ground black pepper

### DIRECTIONS:

1. First make the spice-roasted chickpeas. Preheat the oven to 180°C (160° fan) | 350F | gas 4.
2. Put the chickpeas in a mixing bowl with the oil, spices and a big pinch of salt. Toss until well-coated, then spread them out on a baking tray. Roast for 35 minutes, or until golden and crisp, stirring occasionally.

### FOR THE SPICE-ROASTED CHICKPEAS

400 g canned chickpeas; drained  
1 tbsp olive oil  
1/2 tsp ground coriander  
1/2 tsp ground cumin  
1/2 tsp sweet smoked paprika  
1/2 tsp chilli flakes

3. Meanwhile, make the soup. Heat the oil in a saucepan and fry the onion for 5 minutes or until softened. Add the garlic, coriander and carrots to the pan and cook for 2 more minutes, then stir in the wine (if using) and boil until reduced by half.
4. Add the stock and simmer for 25 minutes or until the carrots are tender. Use a liquidiser or immersion blender to blend the soup until smooth, then season to taste with salt and pepper.
5. Divide the soup between six warm bowls and stir a big spoonful of yoghurt into each one. Sprinkle over the spiced chickpeas and garnish with carrot tops or coriander.

Serve with toasted sourdough on the side.





# A PLACE TO SHARE A MEAL

## CREATING YOUR GARDEN

WITH A LEGACY OF RICH, FERTILE SOIL SUPPORTING A VARIETY OF LOCAL PRODUCE, OUR LARGE FAMILY-SIZED BLOCKS PROVIDE PLENTY OF SPACE TO PLANT YOUR OWN EDIBLE GARDEN TO ENJOY FRESH PRODUCE ALL YEAR ROUND.

## SUMMER YUM

### STRAWBERRIES

A versatile fruit, strawberries are great in both sweet and savoury dishes. They grow best in full sun in pots, but will benefit from afternoon shade in WA's hot summers.

### CUCUMBER

Fresh, delicious and great addition to salads or cocktails. Cucumbers are happiest in rich, well-draining soil – the better the soil is to start, the less feeding they'll need through the season.

### MANGO

Nothing screams summer more than delicious, juicy mangoes. Trees usually are around 8-12m tall, 5-7m wide with dark green leaves, and they like a warm, sheltered position and well-drained soil.

## WINTER TASTE

### SPINACH

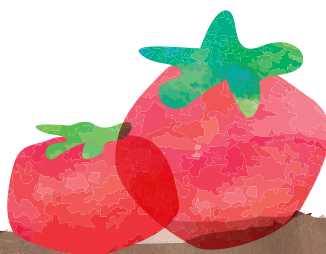
Packed with iron and other healthy goodness, Spinach is a versatile addition to any meal. A prolific plant, one seedling will yield multiple crops so you can grab leaves time and again.

### ORANGE

Citrus are a great fruit tree for any garden. They provide shade, shelter and delicious fruit, are highly versatile and there are varieties suitable for planting in the ground or in a pot.

### LEEK

Great in any hearty soup or warming pie, Leeks are a sweeter relative to the humble onion. Sown in pots and before planting in the garden once big enough, place leeks in a warm, light spot and keep the soil moist.





**GARDENPARKGROVE.COM.AU**

**Contact Damyn Strang  
on 0434 070 654**

GARDEN PARK  
**GROVE**

AN ABUNDANT LIFE

Disclaimer: The content of this brochure was produced prior to commencement of construction. The information, images and artists' impressions including nearby amenities, public areas, streetscapes contained in this brochure are intended as a guide only and are not to be relied on as representative of the product. The information provided herein is believed to be correct but is not guaranteed and does not form part of any offer or contract for sale.

