

GARDEN PARK GROVE

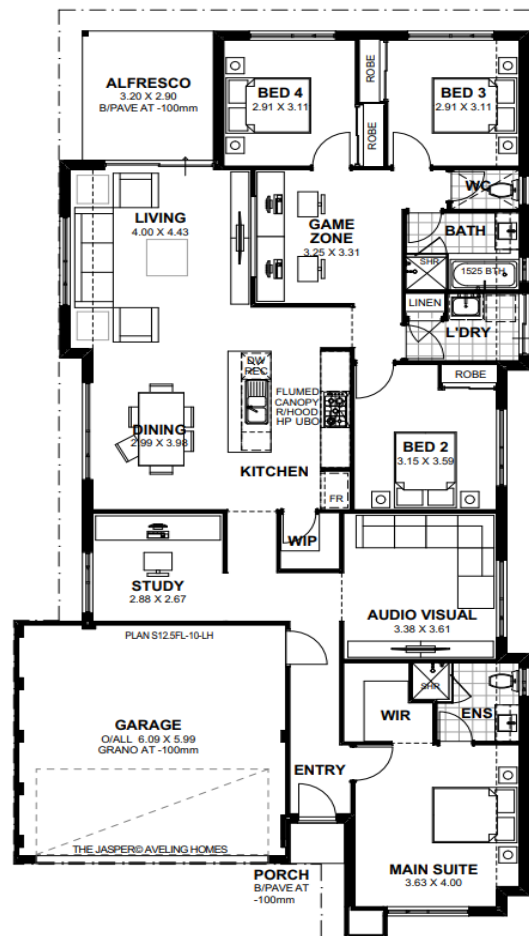
12.5 x 30m | 375sqm



The Jasper | 4 x 2 x 2

from **\$589,771***

- Spacious four bedroom, two bathroom home
- Premium tiling, carpets and flooring
- Stone benchtops throughout
- Master suite with walk-in robe and ensuite bathroom
- Double garage or carport option available
- Clever design makes great use of storage throughout



Russell McDonnell
0404 030 007

* Photos for illustrative purposes only and may not comply with design guidelines. Prices subject to change without notice.

www.gardenparkgrove.com.au | 0434 070 654

