

# GARDEN PARK GROVE

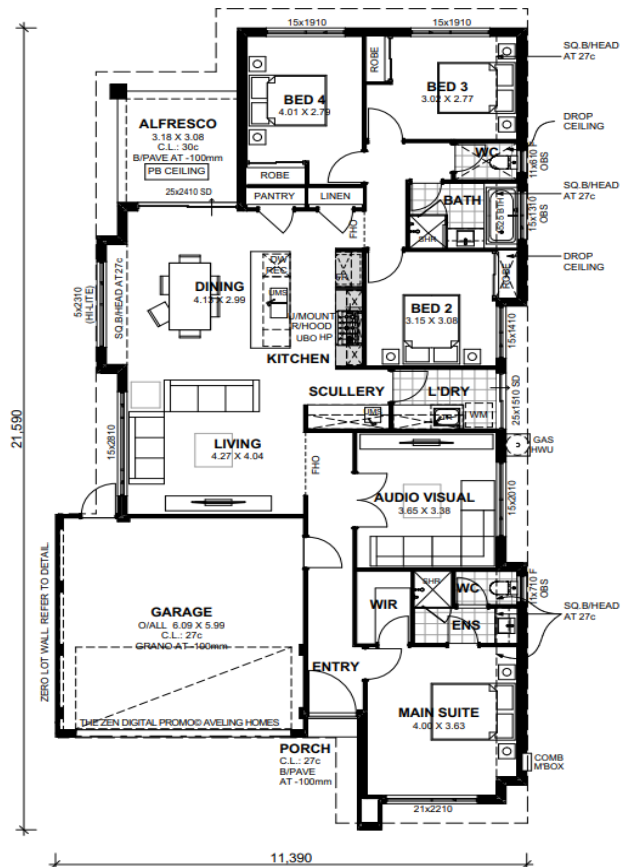
12.5 x 30m | 375sqm



## The Neptune | 4 x 2 x 2

from **\$598,000\***

- Fully turnkey home, move right in
- Overhead Cupboards to Kitchen, Scullery and Laundry
- Quality Blinds
- Premium Tiling, Carpets & Flooring
- Reverse-Cycle Air Con
- Stone Benchtops Throughout



**Cadu Palumbo**  
0425 875 153

\* Photos for illustrative purposes only and may not comply with design guidelines. Prices subject to change without notice.

[www.gardenparkgrove.com.au](http://www.gardenparkgrove.com.au) | 0434 070 654

