

GARDEN PARK GROVE

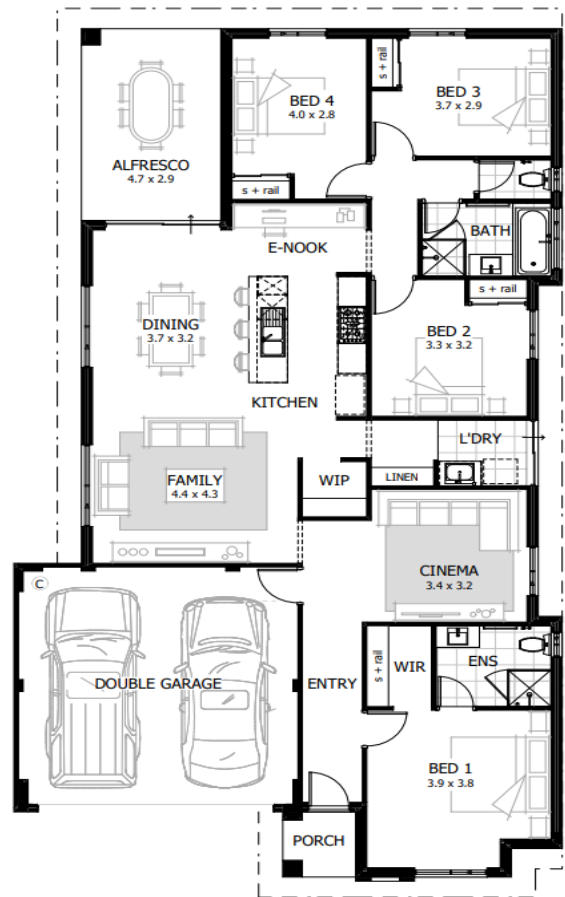
12.5 x 30m | 375sqm



The Ultimate | 4 x 2 x 2

from **\$585,000***

- Spacious four bedroom, two bathroom home
- Open plan family, dining and kitchen space
- Master suite with walk-in robe and ensuite bathroom
- Double garage or carport option available



celebration
MORE TO CELEBRATE HOMES

James Robinson
0417 870 022

* Photos for illustrative purposes only and may not comply with design guidelines. Prices subject to change without notice.

www.gardenparkgrove.com.au | 0434 070 654

abel
landsales
a division of abel property