

GARDEN PARK GROVE

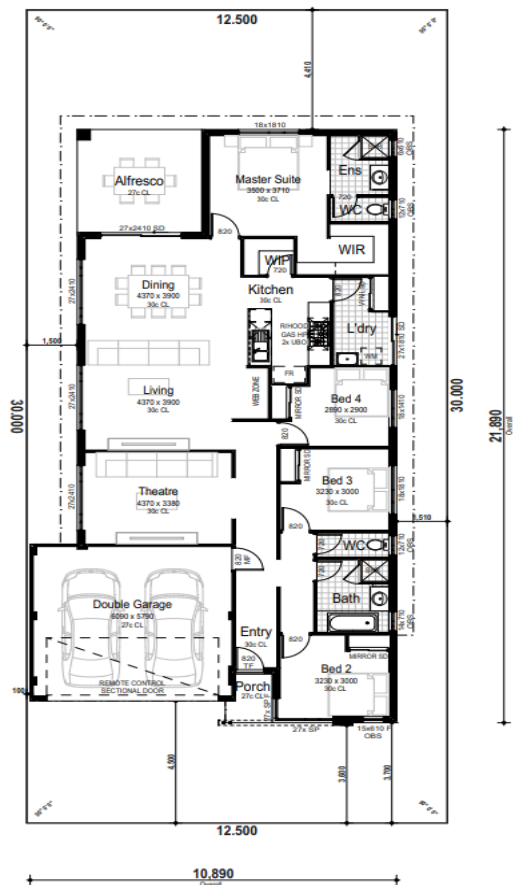
12.5 x 30m | 375sqm



The Santa Cruz | 4 x 2 x 2

from **\$585,000***

- Price and Build Time Certainty
- Fully finished turnkey package
- Open plan living/dining with spacious theatre & walk in pantry
- Daikin Reverse Cycle Air Conditioning
- Fully customisable floorplan



Carolina Serrat Mora
0481 082 014

* Photos for illustrative purposes only and may not comply with design guidelines. Prices subject to change without notice.